



Istanbul Airport Incoming Passenger Guide



It is customized for individuals with autism.

Hello!

I'm CIGA.

**I want to accompany you
throughout your airport journey.**

What do you say?

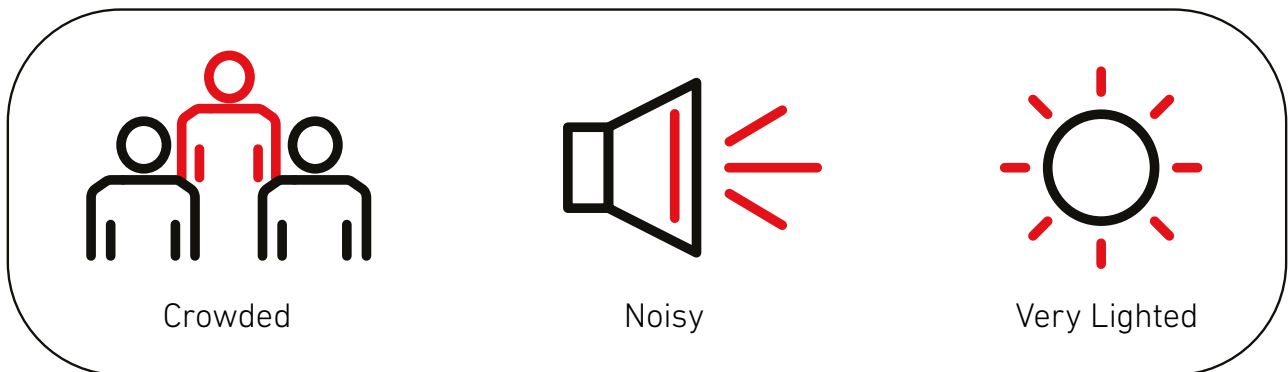


**I hope you have enjoyed your air travel.
Now it is time for your airport journey.
Welcome to our airport.**

- Please make sure to take your carry-on luggage if any when you get off the plane.



A little reminder: The airport is crowded, noisy and very illuminated.



Do you have Very Special Guest Card or Sunflower Badge?
I explained you their use on next page.

Those passengers who are over the age of 65, have Very Special Guest Card, are disabled and have a child between the ages of 0-2 can wait in the buggy stops and go to the passport area via these vehicles.



I GET OFF THE PLANE.



DID YOU TAKE A DOMESTIC OR INTERNATIONAL FLIGHT?

I took domestic flight.



Follow the baggage claim signs.
Go to the next page.

I took international flight.



You can continue from this page.

- If you took international flight follow the baggage claim/passport checkpoint signs.
- Prepare your passport.
- Move towards passport control.
- You may wait in line here a while.



I WENT THROUGH THE PASSPORT CHECKPOINT.

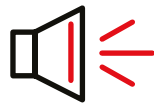


It is time to move forward to baggage claim area.



- You can take your large luggage you have delivered to the airplane luggage area by following baggage claim signs.

The rotating carousels, where you will take your luggage, is movable, they can be mildly loud and be crowded. Try to stay calm.



- After taking your luggage, you can find the exit gates by following “**exit**” signs.
- At the customs point, customs police may want to see your bag.

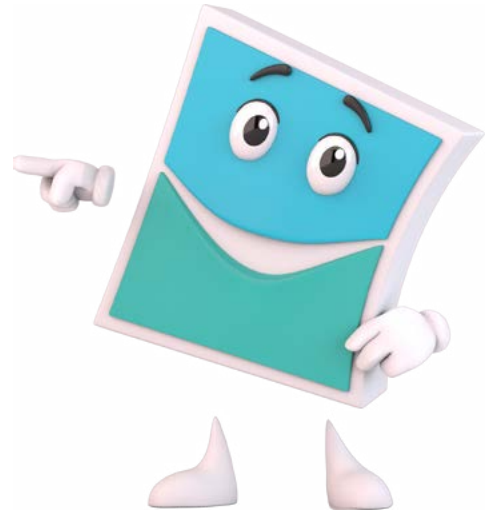
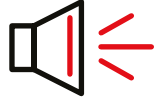


I TOOK DELIVERY OF MY LUGGAGE.



It is time to leave the airport.

When you leave the baggage claim point, you may encounter with crowd and noise after passing through the gate. Try to stay calm.



- If you take a taxi or go to car park, you can move ahead from the floor you are on.
- If you go by public transport vehicles, you can reach the transportation floor by elevator or moving walkway following the **“Bus/Transportation floor”** signs.



I GOT ON THE TRANSPORTATION VEHICLE.



See you in your next journey...